

# TOILET ROLL HOLDER WITH SHELF

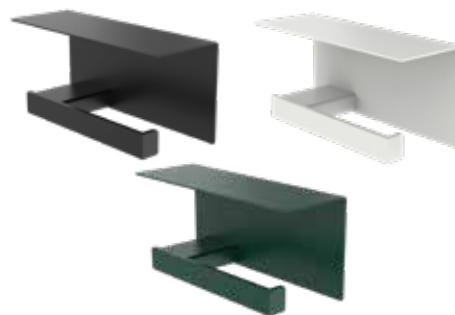
## 5030/5031/5032

Wall mounted

1 standard roll

Ideal for low to medium traffic restrooms

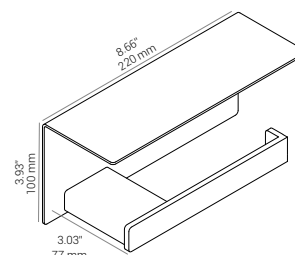
Back-to-back mounting option



This elegant toilet paper holder with a shelf combines elegance with simple functionality. The shelf protects the toilet paper from splashes while providing space for items like mobile phones, keys, or decorative elements. Perfect for smaller restroom facilities with low usage frequency, where space optimization and aesthetic appeal are essential.

### Technical data

	Metric	Imperial
<b>Type</b>	<b>TOILET ROLL HOLDER W/SHELF</b> Prod. No.: 5030, 5031, 5032  Toilet roll holder w/shelf	<b>TOILET ROLL HOLDER W/SHELF</b> Prod. No.: 5030, 5031, 5032  Toilet roll holder w/shelf
<b>Dimensions</b>	H: 100 mm x W: 220 mm x D: 77 mm	H: 3.93" x W: 8.66" x D: 3.03"
<b>Material</b>	Powder coated stainless steel	Powder coated stainless steel
<b>Net weight</b>	0,93 kg	2.05 lb
<b>Tender text</b>	Wall-mounted toilet roll holder w/ shelf. Powder coated stainless steel. Back-to-back mounting option. Netweight: 0,93 kg. H: 100 mm x W: 220 mm x D: 77 mm	Wall-mounted toilet roll holder w/ shelf. Powder coated stainless steel. Back-to-back mounting option. Netweight: 2.05 lb. H: 3.93" x W: 8.66" x D: 3.03"



### Application

The elegant design is suitable for all types of public, commercial, and private homes. Combine it with the spare toilet roll holder in the same design and style.

### References

Customer and staff restrooms, hotel rooms, cafés and small restaurants, clinics, and guest toilet.

### Standard colour

Prod. No.: 5030, RAL 9005, Black, gloss 7-12.  
Prod. No.: 5031, RAL 9003, White, gloss 75.  
Prod. No.: 5032, RAL Classic.

### Material

Wall bracket: Powder coated stainless steel.  
Holder: Powder coated stainless steel.  
Plastic insert: PETG.

### Installation

Wall mounted. Back-to-back mounting option. The products can be mounted back-to-back on both sides of a wall.

